



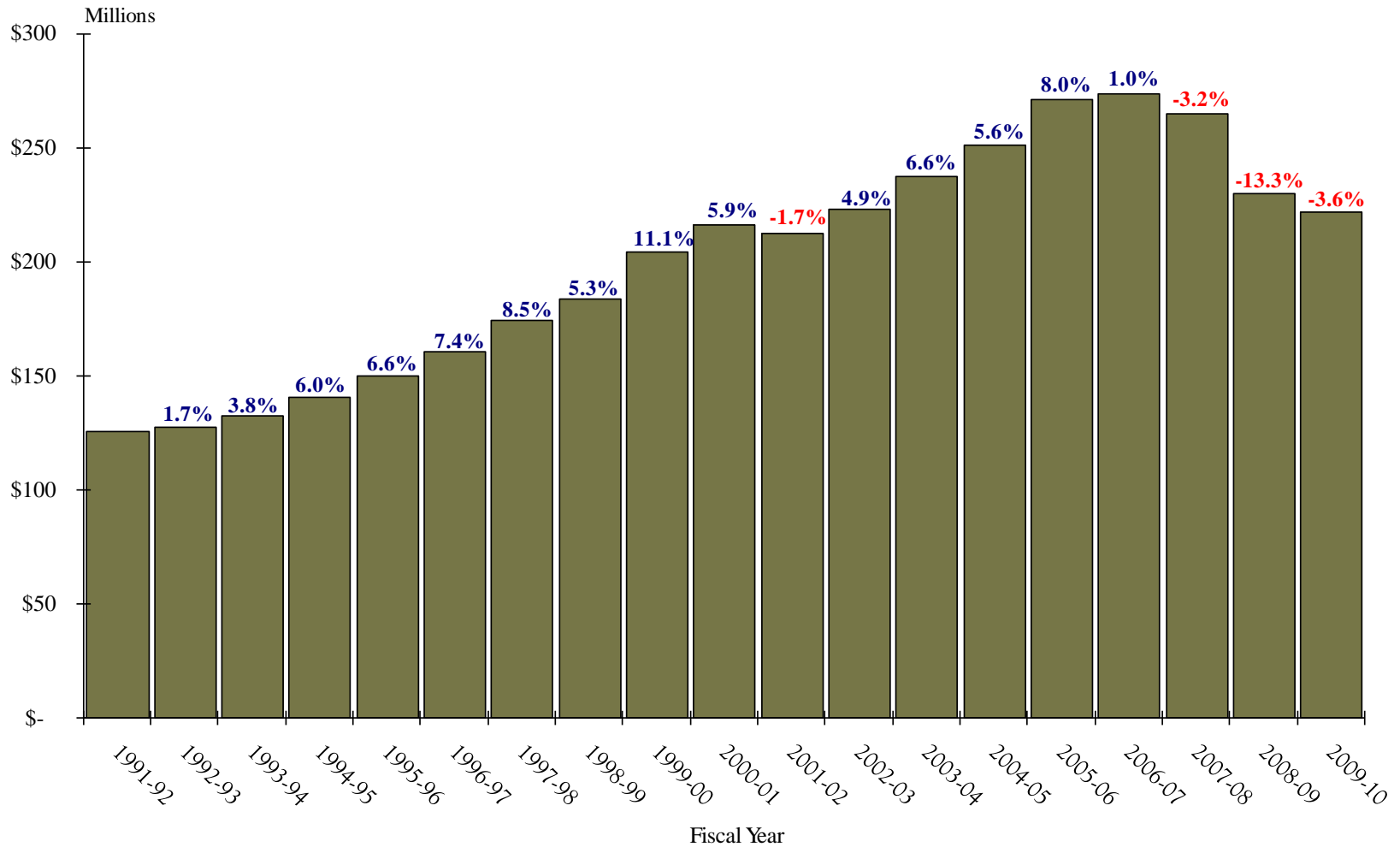
Measure M2 Sales Tax Forecast



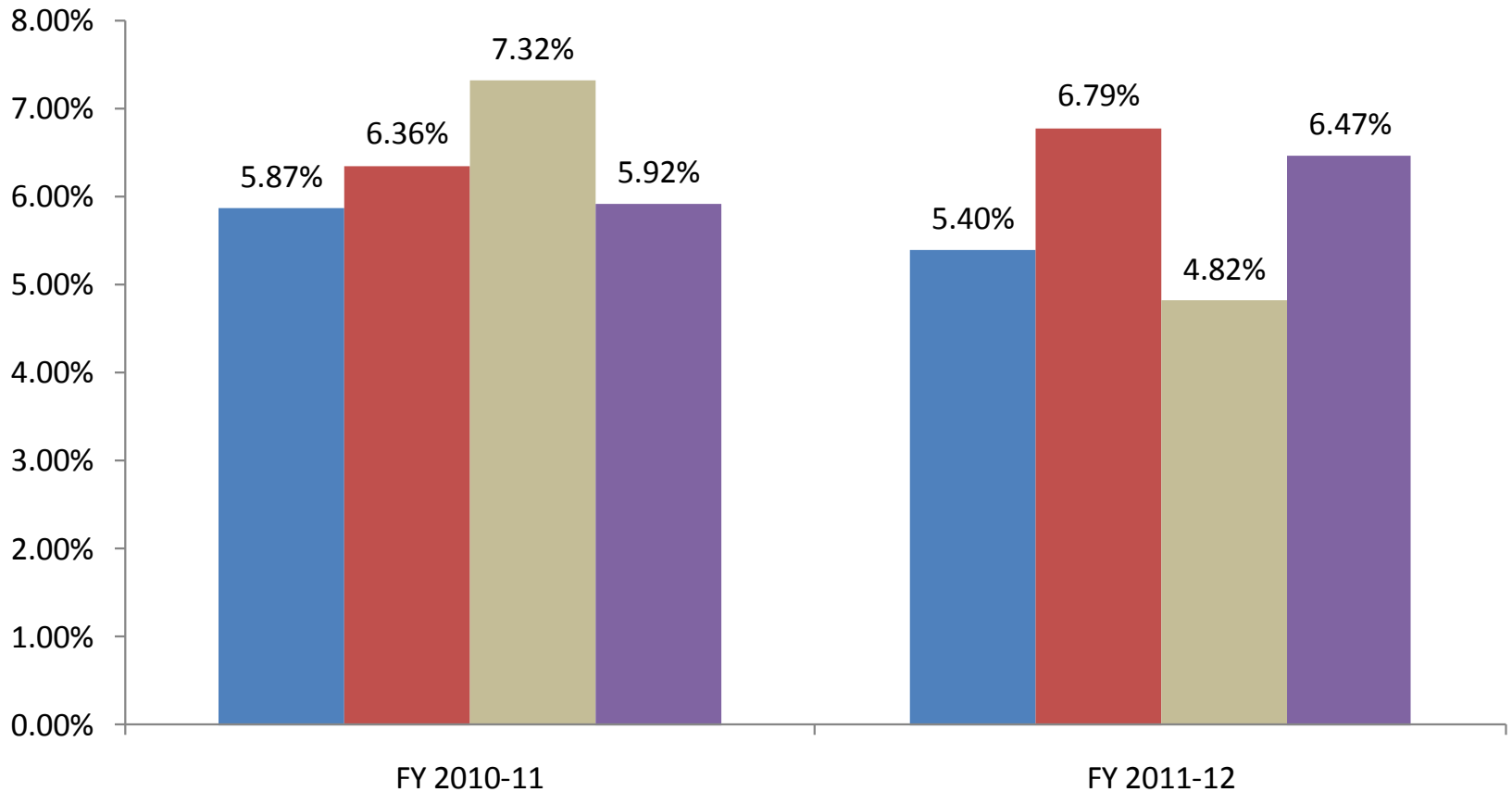
Background

- Chapman University Forecast
 - Since inception of Measure M (M1) in 1991
- Three University Forecast
 - Since development of Measure M2 (M2)
 - Average of three forecasts
 - Chapman University
 - California State University, Fullerton
 - UCLA – Anderson Forecast

Historical M1 Sales Tax Revenues



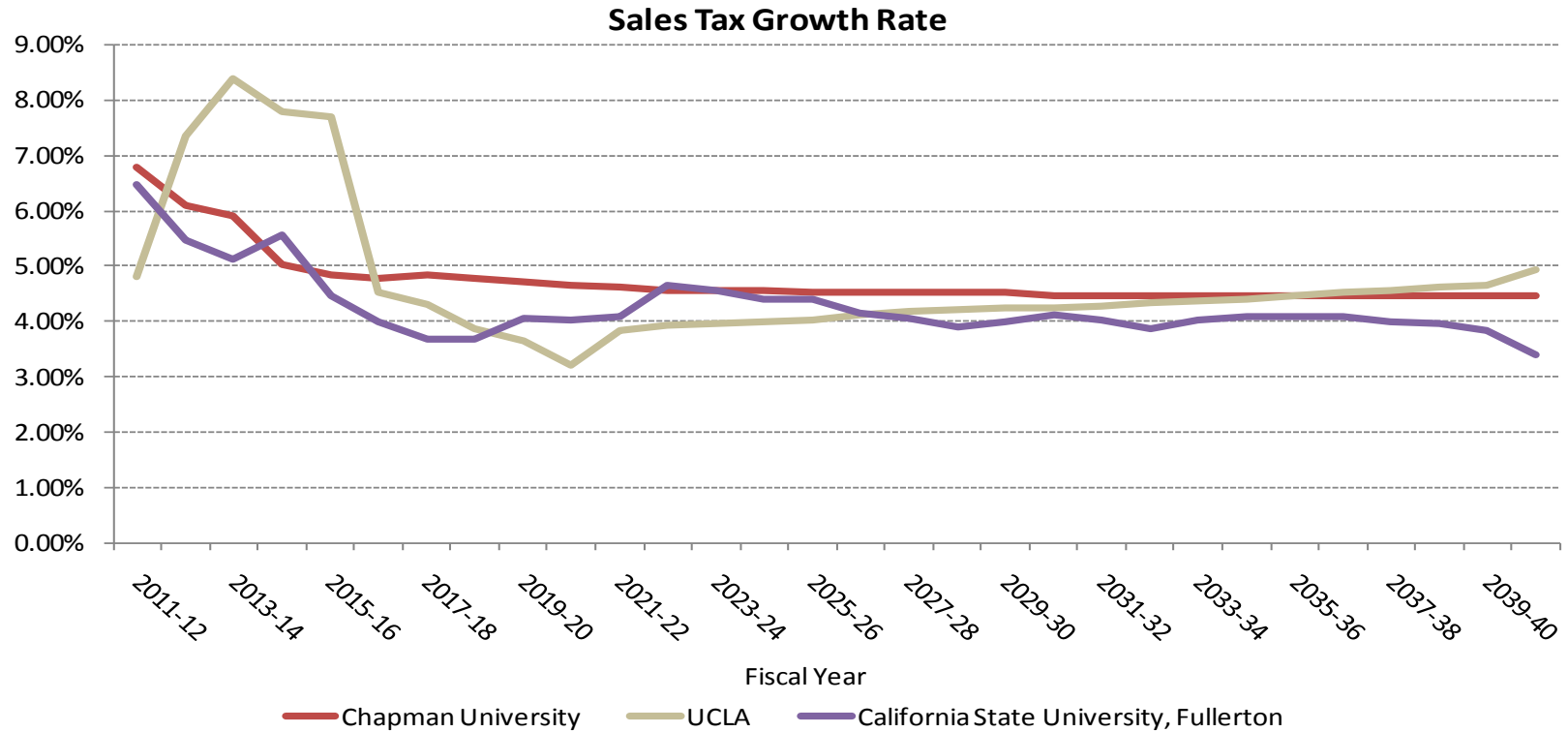
Growth Rate Projections for FY 2010-11 and FY 2011-12



■ OCTA ■ Chapman University ■ UCLA ■ California State University, Fullerton

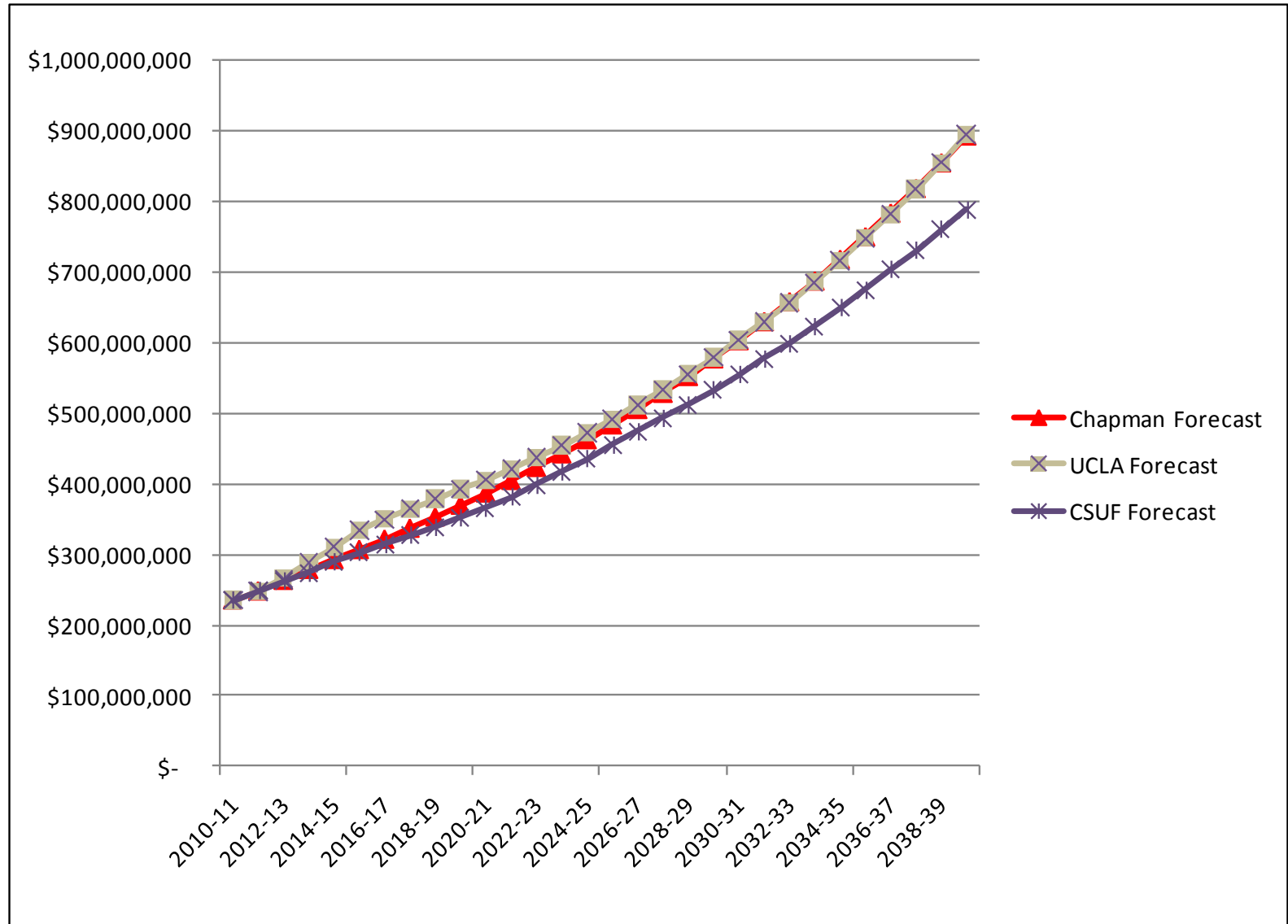


M2 Forecast By University

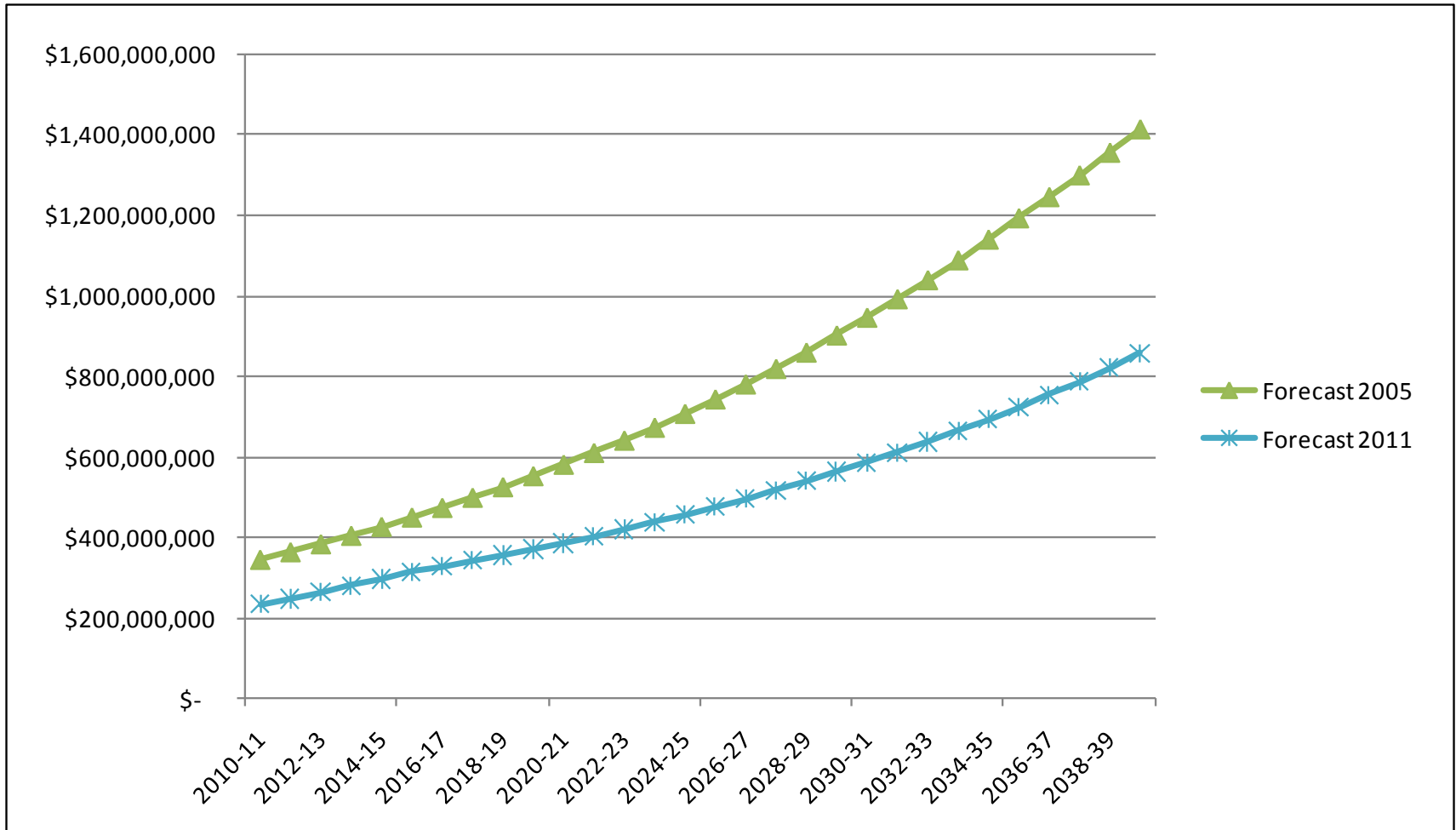


	1-Year Rate FY 2012	Average 3-Year Rate FY 2012-2014	Average 5-Year Rate FY 2012-2016	Average 10-Year Rate FY 2012-2021	Average 30-Year Rate FY 2012-2041
UCLA	4.82%	6.86%	7.21%	5.56%	4.71%
Chapman University	6.79%	6.27%	5.74%	5.24%	4.75%
California State University, Fullerton	6.47%	5.69%	5.42%	4.65%	4.27%

Spring 2011 Forecasts



Forecast Comparison



M2 Forecast Comparison

